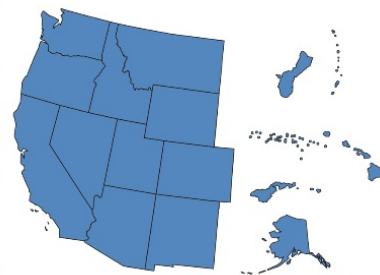


[View this email in your browser](#)

WRC



Western Regional Center to Enhance Food Safety

January 2021 Newsletter

Dear WRCEFS Community,
Below you will find information related to WRCEFS events, relevant resources, funding and job opportunities, and updates from our national partners and alliances.

A graphic with a dark background. On the left, a blue circle contains the text 'Save the Date' in white. To the right, the text 'Western Regional Center to Enhance Food Safety Annual Meeting' is displayed in white, with 'VIRTUAL' in green above 'Annual Meeting'. Below this, the dates and times are listed: 'May 4 1PM-4PM PDT', 'May 5 9AM-12PM PDT', and 'May 6 1PM-4PM PDT'. In the bottom right corner, the 'WRC' logo is shown in white, with the full name 'Western Regional Center to Enhance Food Safety' underneath. The background of the graphic shows a person's back and hair, looking at a laptop screen.

Save the Date

Western Regional
Center to Enhance
Food Safety
VIRTUAL
Annual Meeting

May 4 1PM-4PM PDT
May 5 9AM-12PM PDT
May 6 1PM-4PM PDT

WRC
Western Regional Center
to Enhance Food Safety

5th WRCEFS Annual Meeting- Save the Date!

Planning has begun for the 2021 WRCEFS Virtual Annual Meeting. The annual meeting is planned for May 4-6th, 2021. These three hour sessions will be held from 1-4 PM PDT on May 4th and 6th as well as from 9-12 AM PDT on May 5th.

Stay tuned to future emails and newsletters for registration information and meeting agenda.

Photo credit: Faith Critzer, WSU, 2021



FSOP Webinar

The regional centers will be hosting a FSOP project roundtable on **February 4 from 2:30-4:00 PM ET**. During this roundtable, you will hear updates from 8 USDA-NIFA funded FSOP projects.

To register for this free event, please use this [link](#).

Image Credit: Pixabay, Alexandra Koch, 2020



Funding Opportunities

USDA NIFA has recently released several funding opportunities in food and agricultural sciences, including the call for Food Safety Outreach Program (FSOP) proposals. To learn more about this program and apply for the grant, please click [here](#). The due date for FSOP proposals is **April 1, 2021**.

A communication plan, evaluation of outcomes, and reporting of these activities to Region Centers (Western Regional Center) is required and must be written into proposals. If you are planning to apply, please reach out to Jovana at wrcefs@oregonstate.edu with your communication plan so that a letter of support can be provided.

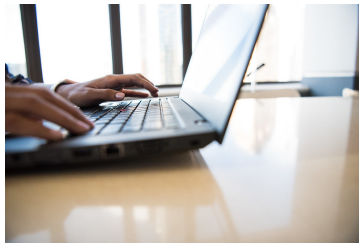
Photo credit: Pixabay, Nattanan Kanchanaprat, 2017



WRCEFS Resources

1) **WRCEFS Annual Meeting Report:** The WRCEFS 4th Annual Meeting was held online on May 12, 2020. During the one day virtual meeting, 92 attendees had the opportunity to hear updates from WRCEFS members and FSOP grant awardees in the Western Region, USDA, FDA, PSA, FSPCA, LFSC, IFAI, sister Regional Centers and Lead Regional Coordination Center. The group discussed regional updates, walked through a demonstration of the peer-review process for add-on materials, and listened to a panel discussion on food industry challenges during the COVID-19 pandemic. The Annual Meeting Report and COVID-19 presentations can be accessed [here](#) and on the [WRCEFS website](#).

2) **Social Media Webinar:** On November 6th, WRCEFS hosted a webinar on social media engagement featuring Dr. Connie



Fisk. Common questions about social media use, engaging with growers online, and the advantages of using social media were some of the numerous topics discussed during this 1 hour webinar. This event was recorded and can be accessed by visiting the [WRCEFS resource page](#) or [YouTube channel](#).

Many thanks again to Dr. Connie Fisk for sharing her wealth of knowledge with us!

Photo Credit: wocintechchat.com

New Podcast Alert!

Tilth Alliance and WSU Food Systems have collaborated to bring their annual farm walks as a virtual listening experience. With the mission of education for farmers, by farmers, this podcast provides new, beginning, and existing farmers with education, advice, and mentorship from experienced farmers, agricultural and food systems professionals, and WSU Extension Specialists. To join in on the weekly walks, check out the farm walks website <https://www.farmwalks.org/>.

Photo credit: Riled Up Goats, 2021



Welcome!

The FDA Produce Safety Network has recently added two new Produce Safety Experts to the Western Region team. Dr. Mauricio Castelo will be working out of Arizona and Lianna Kelly will be working out of California. We wish them a warm welcome to the region and we are excited to collaborate with them in the future!



Training and Resource Updates

1) The Produce Safety Alliance will be offering 4 remote Train-the-Trainer (TTT) courses in 2021.

These are scheduled for:

March 15-18

April 26-29

June 7-10

This course costs \$350 and spaces are limited. To register and learn more about these courses, please visit the PSA website.

2) The PSA team has modified their policy on remote delivery for PSA courses during the Coronavirus outbreak. Below are resources and documents needed to successfully deliver PSA content during this time.

- [Temporary_policy](#)
- [Electronic Course Registration Form](#)
- [PSA Remote Delivery FAQ](#)
- PSA Educators' Call about remote delivery in [English](#) and slides in [Spanish](#)
- [Zoom Webinar Etiquette and Practices page](#)

3) Remote grower trainings are being offered throughout the Western region. To see a complete listing, please visit the PSA or WRCEFS websites.

4) The online PSA grower training course is now open. This three-

week course can be completed at-your-own-pace and is expected to take 15-30 hours total for successful completion. To learn more about costs and key differences in the online course compared to the in-person/remote delivery courses, please visit the PSA website.



FDA Updates

1) FDA Adds Clarifying Descriptions to the Food Traceability List; Publishes FAQ on Food Traceability Proposed Rule

The FDA has made two updates to its materials for stakeholders regarding the [Food Traceability Proposed Rule](#). First, the agency has made clarifying edits to the [Food Traceability List \(FTL\)](#), which lists the foods for which the additional traceability recordkeeping requirements in the proposed rule would apply. The edits to certain commodity descriptions were made for clarity and do not reflect a change in which foods are on the FTL. All of the specific edits are described in a memo titled "[Food Traceability List for 'Requirements for Additional Traceability Records for Certain Foods' Proposed Rule- Clarified Language](#)."

Second, the FDA has published an FAQ, addressing questions that the agency has received about the proposed rule (e.g. during the public meetings, through the FSMA Technical Assistance Network, and during other outreach engagements) to assist stakeholders who are considering providing feedback during the comment period,

which has been extended until February 22, 2021. Comments can be submitted at [regulations.gov](https://www.regulations.gov), Docket ID: FDA-2014-N-0053.



WRCEFS FSPCA and PSA Training Information

WRCEFS is interested in having anyone who delivers PSA or FSPCA courses remotely to share their experiences with the rest of the group so we can learn from their activities. If you plan on offering remote courses and would be willing to share your experiences, please email Jovana Kovacevic at wrcefs@oregonstate.edu.

We understand collecting pre-/post-test data during remote training is challenging. A fillable version of these tests are now available. If interested, please email Stephanie Brown at wrcefs@oregonstate.edu to obtain a copy. There are also polling options available in Zoom for capturing this information. If you have any specific questions on Zoom polling options, please contact us at wrcefs@oregonstate.edu.

If you are capturing these data, please share with WRCEFS. For any remote courses, please continue to share all cover sheets

and attendance rosters with WRCEFS. On the cover sheet, please indicate that the training was delivered remotely.

Survey Request

Partners at the University of Vermont, Cornell University, USDA, and National Farmers Union Foundation are working together to develop a new training program to help small and medium-scale farmers take their businesses to the next level of safe and efficient vegetable handling systems. Do you have a few minutes to complete a short survey to help us? The voice of farmers is invaluable to the process.

Survey Link: <https://forms.gle/zXYeYdXYo9P2ZAqt7>

Project Site: <http://go.uvm.edu/scrub>

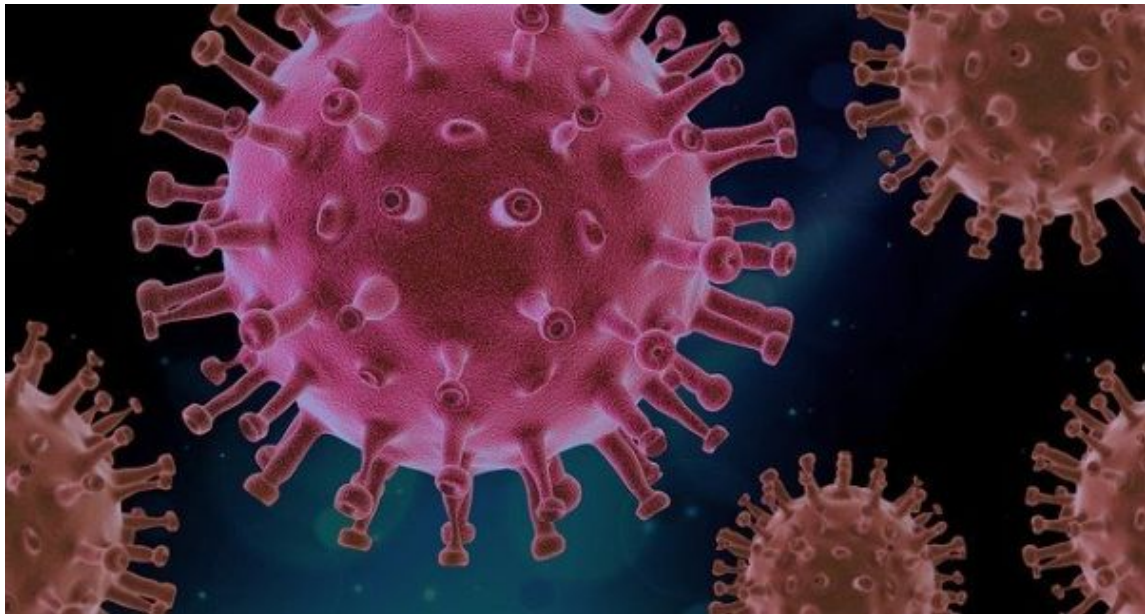
Members



FACES OF WRCEFS

Faces of WRCEFS

We have added a new section to the website called the Faces of WRCEFS. Here you can find staff spotlights, featuring our leadership team and partners. The goal of Faces of WRCEFS is to highlight the diverse expertise of our regional leaders by showcasing their stories and work related to the Food Safety Modernization Act.



COVID-19 Resources

1) The OSU team has created a page on the WRCEFS website dedicated to COVID-19 and food safety resources. We currently have many fact sheets, social media images, and links to other federal and state-specific websites and resources for viewing.

If you have made any fact sheets, documents, or websites related to food safety and COVID-19 and want these shared within the Western region, please email us at wrcefs@oregonstate.edu.

2) North Carolina State University, Rutgers University, the University of Florida, and the University of Nebraska-Lincoln have partnered to develop FoodCoVNET. This team will be evaluating current practices through laboratory research on virus persistence, inactivation and transfer. Results collected from this team will be provided on their [website](#), which will serve as a hub information related to SARS-CoV-2 management in the food sector. For more information about the team and to view current resources, please check out their website (<https://foodcovnet.ces.ncsu.edu/welcome-to-foodcovnet/>).

Job Opportunity

Midwest Extension Associate - Produce Safety Alliance

Position closing date: March 1, 2021

The Produce Safety Alliance (PSA), based in the Department of Food Science at Cornell University, is a collaborative project with the United States Department of Agriculture (USDA) and the United States Food and Drug Administration (US FDA) to provide educational outreach assistance to fresh produce growers and packers, including grower cooperatives, to increase their understanding of the critical role they play in public health by implementing food safety practices on the farm and in packinghouses. Since 2010, the PSA has been developing and delivering a standardized curriculum to educate fruit and vegetable growers, educators, industry members, state departments of agriculture, and regulatory officials on current best practices and guidance related to produce safety, as well as the regulatory requirements that were issued by the US FDA in November 2015 in the Standards for the Growing, Harvesting, Packing, and Holding of Produce for Human Consumption (a.k.a., Produce Safety Rule) as part of the Food Safety Modernization Act (FSMA). In addition to conducting trainings to increase understanding and implementation of practices in the FSMA Produce Safety Rule, the PSA team provides technical assistance, develops additional educational materials and facilitates collaboration nationally and internationally to address implementation challenges.

As a key member of the PSA team, the Mid-west (MW) Regional Extension Associate (REA) will be responsible for planning, organizing, instructing, and evaluating PSA training programs for produce growers, extension educators, and regulatory personnel in their region. Due to extensive national and international collaboration established by the PSA, it is anticipated the MW REA will interact with a diverse population of individuals and groups with specific emphasis in the Midwest including, but not limited to, State Departments of Agriculture personnel, commodity groups, Land-Grant University personnel, and the FSMA North Central Region Center for FSMA Training, Extension, and Technical Assistance (NCR FSMA Center) collaborators. The MW REA will facilitate and provide leadership for in-person meetings as applicable, conference calls and webinars and be directly involved in training other individuals to use the developed curriculum; provide continual feedback to PSA

leadership through preparation of regional impact reports, training evaluations, and outreach activities; and participate in weekly PSA team calls. Must be willing to travel regionally and nationally a significant amount of time (~50%) pending COVID-19 control, including non-traditional and weekend work hours. This position will be located in the Midwest U.S. with exact location being flexible within the 12-state region. Position will be supervised by the PSA Director, Dr. Elizabeth A. Bihn.

To learn more about the position and/or apply, please use this link: <https://academicjobsonline.org/ajo/jobs/18040>

WRCEFS Communication

Website

Website content is constantly being added so please continue to check back with us to find new resources, training opportunities, and more!

Social Media

Follow us on Social Media! We have WRCEFS accounts on [Facebook](#), [Twitter](#), and [Instagram](#)! We will be posting updates, regional spotlights, and upcoming training opportunities on a weekly basis. We will also be sharing this information on the WRCEFS website. If you have anything that should be shared with the WRCEFS community, please contact Stephanie Brown (wrcefs@oregonstate.edu).

Stay safe!



Our mailing address is:

wrcefs@oregonstate.edu

Want to change how you receive these emails?
You can update your preferences or unsubscribe from this list.

This email was sent to << [Test Email Address](#) >>

[why did I get this?](#) [unsubscribe from this list](#) [update subscription preferences](#)

Western Regional Center to Enhance Food Safety · 1207 NW Naito Pkwy · Portland, OR 97209-2834 · USA

