

## POTATO UPDATE

Hermiston Agricultural Research and Extension Center

August 21, 2009

2121 South 1<sup>st</sup> Street, P.O. Box 105, Hermiston, Oregon 97838, T 541-567-8321 | F 541-567-2240

Silvia I. Rondon, Extension Entomologist • Philip B. Hamm, Extension Plant Pathologist

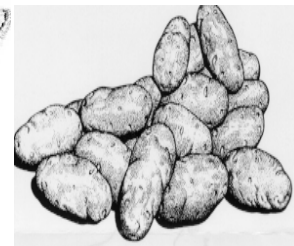
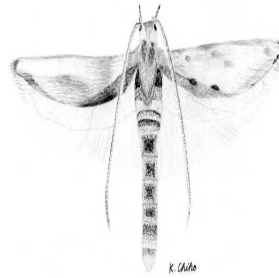
### Insect Trap Report

Serving Umatilla and Morrow Counties

Traps are collected on Thursdays.

TRAP	PTW	BLH
0	0	1
1	0	2
2	6	57
3	1	11
4	4	64
5	1	36
6	5	1
7	1	24
8	0	28
9	0	6
10	0	0
11	0	7
12	0	1
13	5	1
14	2	1
15	16	3
16	6	1
17	8	2
18	1	25
19	0	8
20	0	0
21	0	0
22	0	6
23	0	6
24	1	6
25	0	1
26	0	14
27	0	0
28	0	0
29	3	6
30	4	63
31	0	3
32	0	52
34	30	3
35	0	13

PTW: Potato Tuberworm  
BLH: Beet Leafhoppers



### FYI

- The potato psyllid is the insect vectoring zebra chip disease found in Texas and Central America
- Psyllids look similar than winged aphids
- Aphids almost always have pipes or cornicles near the end of the abdomen
- A typical aphid is pinhead-sized pale green, but may be colored pink, dark brown or black depending on the color of the plant sap they are feeding from.
- There are usually winged and wingless generations
- Unlike leafhoppers to which aphids are closely related, they don't jump around when they are disturbed.



Potato Psyllid



Aphid

HAREC: <http://oregonstate.edu/dept/hermiston/>

HAREC Entomology Lab:  
<http://oregonstate.edu/dept/hermiston/entomology-laboratory>

**LATE BLIGHT HOTLINE**  
**1-800-705-3377**