

POTATO UPDATE

Hermiston Agricultural Research and Extension Center

July 24, 2009

2121 South 1st Street, P.O. Box 105, Hermiston, Oregon 97838, T 541-567-8321 | F 541-567-2240

Silvia I. Rondon, Extension Entomologist • Philip B. Hamm, Extension Plant Pathologist

Insect Trap Report

Serving Umatilla and Morrow Counties

Traps are collected on Thursdays.

TRAP	PTW	BLH	PA	GPA	OA
0	0	4	0	0	0
1	0	1	0	2	12
2	2	84	0	0	15
3	3	13	2	0	16
4	0	85	0	0	12
5	0	32	0	0	2
6	2	31	0	0	3
7	1	44	0	0	4
8	1	0	0	0	0
9	0	6	0	0	0
10	0	4	0	0	2
11	0	1	0	0	0
12	0	5	0	0	0
13	3	4	0	0	2
14	0	8	0	0	4
15	5	Missing	0	0	5
16	9	1	0	0	0
17	0	7	0	0	8
18	10	45	0	0	5
19	4	19	0	0	2
20	0	3	0	0	0
21	0	14	0	00	0
22	0	6	0	0	5
23	0	3	0	0	0
24	0	9	1	0	3
25	0	7	0	0	0
26	0	28	0	0	0
27	1	9	0	0	0
28	0	5	0	0	0
29	0	4	0	0	0
30	0	41	0	0	0
31	0	6	0	0	4
32	0	27	0	0	2
33	removed	→	→	→	→
34	0	14	0	0	0
35	41	3	0	0	0

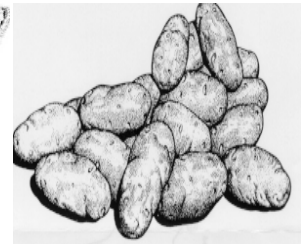
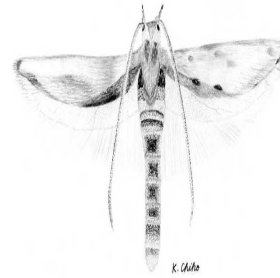
PTW: Potato Tuberworm

OA: Other Aphids

BLH: Beet Leafhoppers

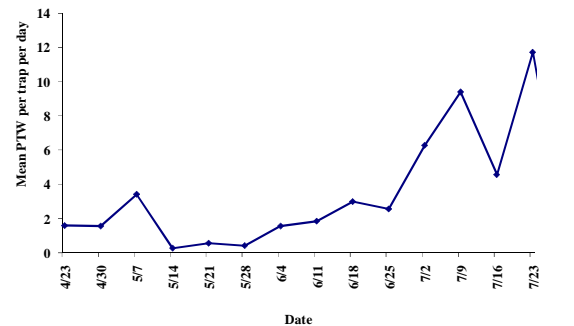
PA: Potato Aphids

GPA: Green Peach Aphid

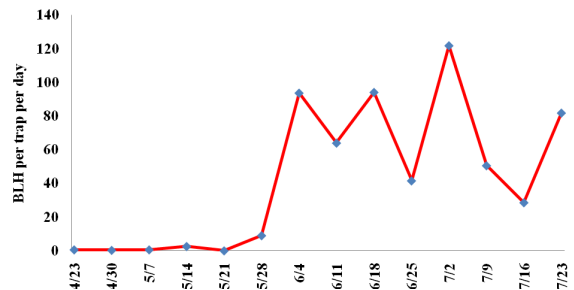


FYI

Population dynamics of PTW in the lower Columbia Basin, OR 2009



Population dynamics of BLH in the lower Columbia Basin, OR 2009



HAREC: <http://oregonstate.edu/dept/hermiston/>

HAREC Entomology Lab:

<http://oregonstate.edu/dept/hermiston/entomology-laboratory>

LATE BLIGHT HOTLINE

1-800-705-3377